

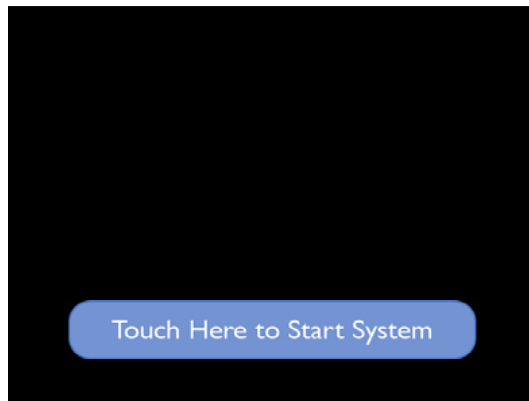
# Bickner Auditorium / 3735

## Starting up

Note: if computer's desktop does not project on screen...

- 1) Make sure computer is on (open cabinet's left door below)
- 2) Turn AV system off, then on again.

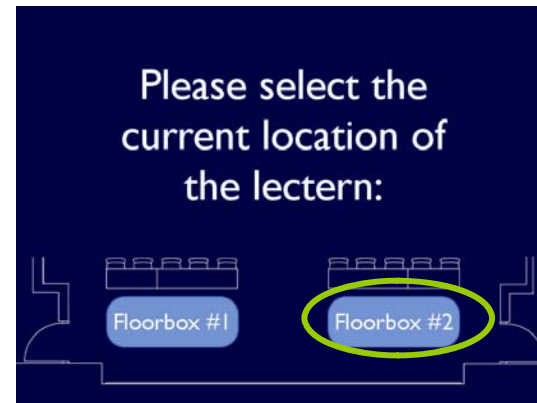
Problems? Call Kin-Help 4-4015



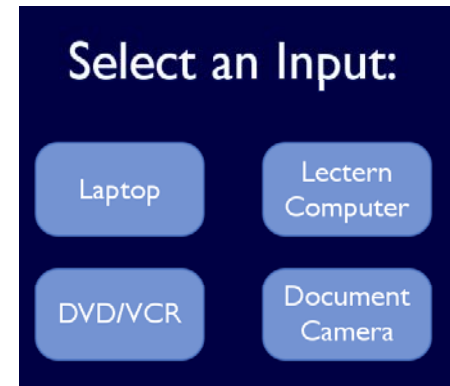
Wake up system by touching screen.  
Press "Touch Here to Start System"



System starts up



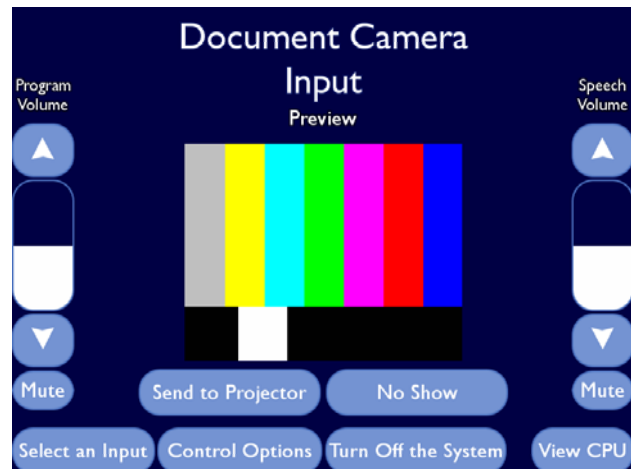
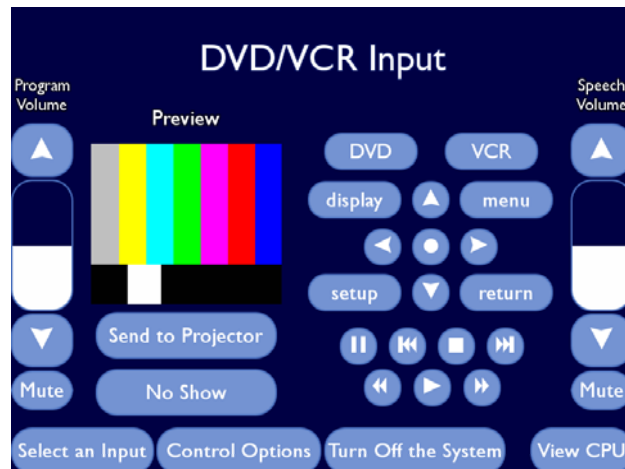
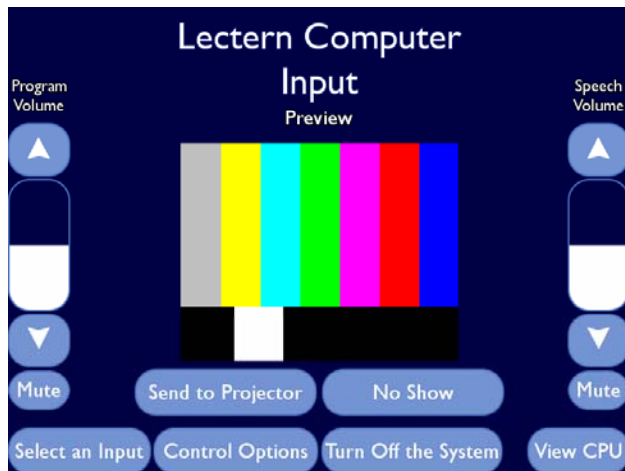
Select Floorbox #2 if you are on the  
north side of the room (closest to 3733)



Select an input ("Document Camera" is the Visualizer).

Problems? Call Kin-Help 764-4015

## Screen shots of the four inputs



Press **Send to Projector** to project onto the screen. Screen will automatically descend.

It will say **No input found** onscreen as it warms up. Don't worry, this is normal. Wait a few minutes.

**No Show** is the same as Pic Mute – it quits projecting.

**Program Volume** is for audio coming from computer, dvd, etc. **Speech Volume** is for the microphone.

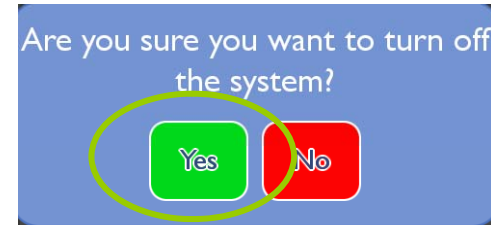
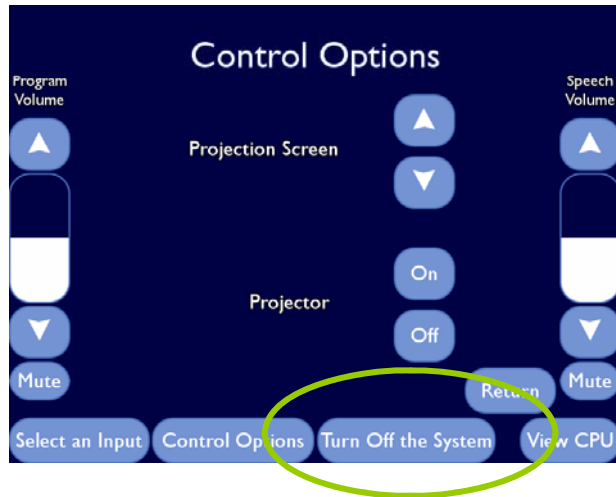
To view full screen of the CPU, press **View CPU**.

To play a CD or a **data-formatted** dvd, put it in the computer's CD drive. **Movie-formatted** dvds go in the dvd/vcr.

Problems? Call Kin-Help 764-4015

Problems? Call Kin-Help 4-4015

## Shutting down



Once it gets to  
**Please wait for the system to shutdown,**  
there is no way to interrupt it.